

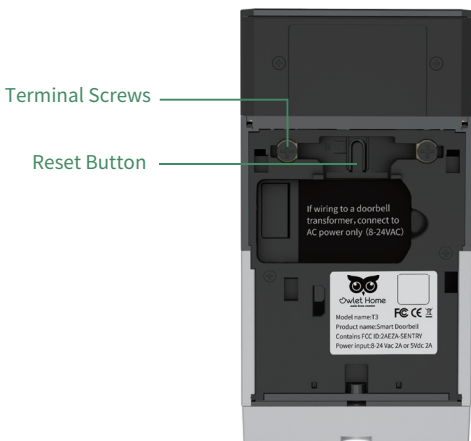
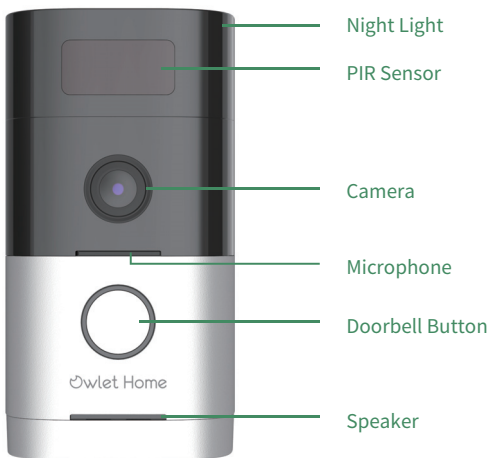


# Quick Start Guide

[support@owlethome.com](mailto:support@owlethome.com)

[www.owlethome.com](http://www.owlethome.com)

## 1. Meet the doorbell



## 2. (1) What's in the box



T3 Video Doorbell x 1



Screwdriver x 1



Adapter Cord x 2



Drill Bit x 1



Tamperproof Screw x 1



Screws x 4



Installation Sticker x 1



Twist-on Wire Connector x 2



Anchors x 4

## (2) Tools you may need:



Drill



Hammer

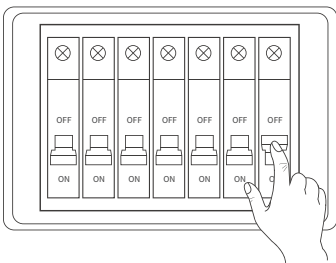


Pencil

### 3. Installation

#### Safety Reminder:

1. It is highly recommended to switch off power to your doorbell prior to installation. You can switch off power by turning off the circuit breaker for your doorbell.



2. If your doorbell is not connected to a chime (e.g. you're connecting T3 directly to a Low Voltage Transformer), please do NOT enable the "Doorbell Chime" option in-app. Enabling the chime option without an installed chime may pose a serious fire risk when the doorbell button is pressed.

#### (1) Remove the base plate

Slide down to remove the base plate from the doorbell.



## (2) Install a micro SD card

If you want to install a micro SD card, please push back to remove the PIR module, insert a micro SD card into the SD card slot, and then replace the PIR module.



## (3) Stick the installation sticker on the wall

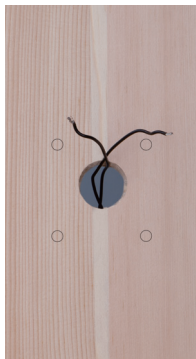
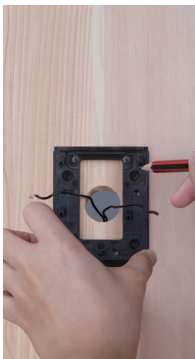
Remove the existing doorbell (if you have one) and leave the wires on the wall. It is recommended to switch off the power to the doorbell wires.

Stick the installation sticker on the wall so that the wires go through the center hole on the sticker.



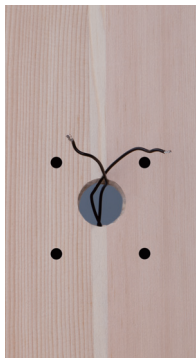
## \* use a pen to mark the 4 spots on the wall

If your wall has an uneven surface and the sticker won't hold, you can also use a pen to mark the 4 spots on the wall.



## (4) Drill holes

Use the provided drill bit to drill 4 holes at the marked spots on the sticker. Remove the sticker after finishing.



## (5) Insert the plastic anchors

Put the plastic anchors into the 4 holes. If necessary, use a hammer to gently tap them in until they are flush with the wall.



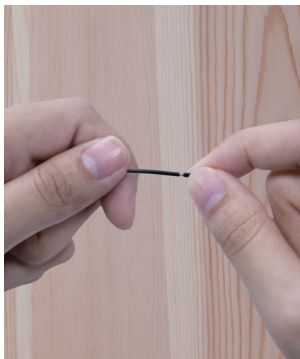
## (6) Install the base plate

Place the base plate over the holes, and use the provided screws to secure the base plate.



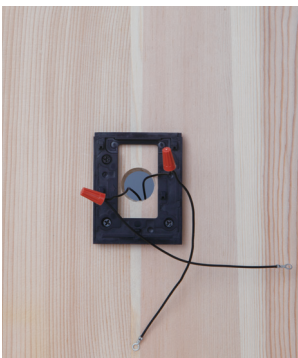
## (7) Attach the adapter cords

Remove the plastic caps from the adapter cords. Attach each adapter cord to a wire.



## (8) Connect the wires

Use the provided twist-on wire connectors to secure the adapter cords and the wires.





### (9) Remove the screws

Use the provided screwdriver to remove the two screws from the back of Video Doorbell.



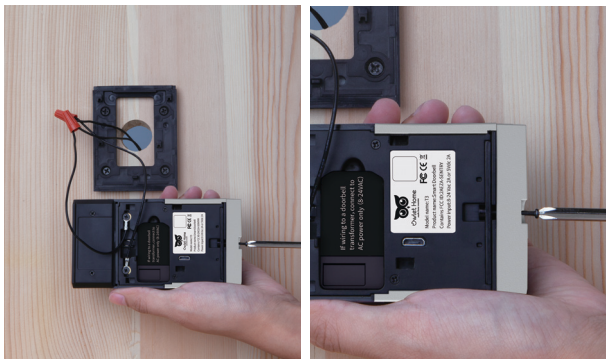
### (10) Secure the adapter cords

Attach each adapter cord to a screw, and tighten the screws to secure the cords. It doesn't matter which cord is attached to which screw.



## (11) Prepare the tamperproof screw

Drive the provided tamperproof screw slightly into the bottom screw hole on the T3 doorbell. Please make sure the tip of the screw stays beneath the end of the screw hole.



## (12) Mount T3 on the base plate:

Slide the doorbell down on the base plate until it's in place. Tighten the tamperproof screws. Installation is now complete.



# Quick Start Guide

1. Download "Owlet home" from Google Play or App Store.



2. Connect your T3 Doorbell to power, and wait until it says "waiting for connection".
3. Log in to Owlet home or create a new account.
4. Tap the "+" button at the top right corner of the screen.
5. Select "Video Doorbell" and follow the instructions on screen to complete the setup.

## Customer service

✉ [support@owlethome.com](mailto:support@owlethome.com)

🌐 [www.owlethome.com](http://www.owlethome.com)

